

sunshine in **Shirley**

September 2023

Shirley Mini market

SATURDAY 23RD SEPTEMBER

11am - 1pm

At The
Neighbourhood Centre
17 Acheson Ave

A variety of stalls -
Food / clothes / plants / gifts
and more

For more info, contact Sharyn: 022 621 8269



She is
not
your
rehab



Whānau Event

Kids Activities

From 4 pm

Pizza

From 6 pm

Guest speakers

Matt & Sarah Brown from
SHE IS NOT YOUR REHAB
From 6:30 pm



Great Spot Prizes



Gold coin koha
towards Junior
Hawks



Thursday
28th Sept



33 Briggs Road



Working together for whānau hauora in Shirley

FREE Cervical Screening

The MacFarlane Park Centre
19a Acheson Avenue in Shirley
Saturday 9th September 2023

*Booking is essential *

Call 0800 729 729 to
check your eligibility for
a FREE screen and to
make an appointment.

"Kia noho ora ai koe, kia
noho ora ai tou whānau"
If you are well, your whānau is well



National
Cervical
Screening
Programme

My body, my health, my future

FREEPHONE 0800 729 729

FOR MORE INFORMATION, VISIT www.timetoscreen.nz



A growing number of preschool children and their Mums, Dads, Grandparents or caregivers are enjoying the music, movement, songs and fun each Monday 9:30-11:30 am (in term time) at the MacFarlane Park Community Centre, 19A Acheson Ave.

Morning tea is provided. \$3 per family. To join in the fun or for more information, contact Carol on 027 282 0693.



Is Gambling a Problem?

The Salvation Army Oasis offers free counselling and support for anyone affected by gambling harm, whether it's their gambling or someone else's. They are open to everyone, free and confidential, they'd love to have a chat! Call them on (03) 365 9659 or call in to 126 Bealey Ave.

Website: oasis@salvationarmy.org.nz



Oasis
Reducing Gambling Harm

ARE YOU WORKING?

Do you need help to upskill?

We have space available in our FREE Workplace literacy and numeracy course. Work one-to-one with a tutor on your goals.

Some eligibility requirements.
Call us to see if this is right for you!

Contact us now:
03 364 5212 or 027 899 5220
Email: halcadmin@hagley.school.nz

www.hagleyadulteracy.org



**HAGLEY ADULT
LITERACY CENTRE**
102 Champion Street
Edgeware

Thanks to all those who contribute to this newsletter – through articles or photos plus all those who deliver the copies each month.



MONEY MATTERS

A presentation on how to
make your money go further

THIS MONTH'S TOPIC:
Free digital support with phones
& computers
thanks to TechMate

Techmate provide a friendly, safe place for you to learn to use your phone or computer.

- Free basic computer lessons with a friendly volunteer
- Supplying low cost Skinny Jump internet access
- Donating free computers to get people online
- Free or low-cost computer/laptop repairs

Come and find out about this free service in our community.

Wednesday 13th September
10am
MacFarlane Park Centre

Morning tea provided

Contact Sharyn for more info - 022 621 8269



Shirley Village Project

"Shirley residents and organisations working together for a 'caring, colourful, and connected' Shirley Community."

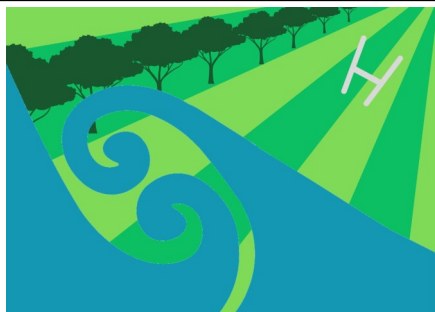
For more info visit: www.shirleyvillage.org or Shirley Village FB



Community Led Development in Shirley Workshop

Tuesday 12th September, 9 am – 3 pm at MacFarlane Park Centre. Learn about Community Led Development, what is happening in Shirley and how you can contribute. Connect with others who live, work and play in this community. A free workshop with limited spaces.

To book contact Bec on 021 125 7846 or email shirleyvillagebec@gmail.com.



Slackline Opening

Join us for the opening event of a public slack line in lower MacFarlane Park playground Sunday 24th September, from 2 – 4 pm.

A leisurely family Sunday afternoon with Slackline tutors, BBQ and activities. Try your balance skills!

This new activity is an outcome from the SVP Quick Win event



AED Gifted to Shirley Rugby League Club



Jess, Hato Hone St John and Bernie, Shirley Rugby League with the new AED

An Automatic External Defibrillator has been installed on the front wall of the Shirley Hawkes Rugby League Clubrooms, 33 Briggs Road. The AED is available 24/7 with a code given when calling 111 in an emergency.

A big thanks to Hato Hone St John, Shirley Rugby League, and Shirley Firewood Club for getting this life saving device into the community.



Hato Hone
St John

First Aid: If you are interested in getting or renewing your First Aid certificate, please contact Steve on 021 186 3645.

Meet the candidates

Thursday 21 September, 7-8:30pm
MacFarlane Park Centre
19A Acheson Ave

Meet the people who want to represent your community for the next 3 years in government - both general and Māori electorate candidates invited.

Election Day is 14 Oct. Enrol or check your info at www.vote.nz or by calling 0800 36 76 56.



Wahine Toa Shirley is a fortnightly group for women who have lived experience of family violence. It's a safe space to connect & support each other as you journey through healing. Please contact Emma for details on 022 103 8351.

Congratulations to Yolan Collins, who we know as Yo, who was recently given a Volunteer Award through Volunteering Canterbury. I asked her the following questions about her time with the Shirley Community Trust:

How long have you been volunteering in the Shirley Community?

I have been volunteering at Shirley Community Trust for about 20 years.

What have been some highlights during that time?

- Meeting, and working with some fantastic people who just want to make Shirley "a better place".
- Seeing parents I met when I first helped at the SCT Friday Meal 20 years ago, still helping others in the community and some of their children/grandchildren becoming involved in SCT projects also.
- Watching so many SCT and SVP initiatives start up and flourish because community-minded people are willing to "roll up their sleeves" and contribute in whatever way they can.
- Having some good laughs, even when things haven't gone quite to plan...
- Learning new skills.
- Toni's sausage rolls at Nail Clinic.

What would you say to someone wanting to volunteer?

Give it a go, somehow you get more out of it than what you put in (usually extra kilos if you hang around the Café too much)!

What gives you joy and enjoyment?

Family and friends... My church and Community housegroups... Good conversation and coffee at the SCT Café... Gardening, music, reading, and walking to see really beautiful scenery.

What has been advice that have guided my life?

My parents always said treat others as you would like to be treated yourself and a school friend told me that Jesus loved me!

Thank you Yo for all you have given and continue to give. Your love, care and commitment has encouraged and supported many and made Shirley the community it is today.

Carol Renouf / Community Nurse



shirley
community trust

Thankfulness Lunch

Join us to acknowledge our wonderful volunteers and the gift of the Park Centre to our community

MONDAY 11TH SEPTEMBER
12-1.30PM

At the Park Centre
19A Acheson Ave

Light lunch provided

Learner Driver Licences: For support to learn the Road Code, text Steve 021 186 3645

Shirley Tool Shed: Open every Wednesday, 4 pm to 6 pm at 33 Briggs Road. Over 500 tools/items to borrow.

For more info visit <https://shirleytoolshed.myturn.com> or call Steve on 021 186 3645.

Community Lawn Mower: Contact Warren by text 021 0235 5869 to book the community mower.

Delivered for \$12 per use which includes fuel.

shirley
community trust

Empowering people...changing lives

(03) 981 5521



shirleycommunitytrust



office@shirleycommunitytrust.org.nz



www.shirleycommunitytrust.org.nz

We deliver Sunshine in Shirley to every letterbox in our neighbourhood. We hope you value our newsletter more than advertising or junk mail. However, if you do not wish to receive this newsletter, please contact us at office@shirleycommunitytrust.org.nz. Thanks, the SCT team.