

sunshine in *Shirley*

July 2024

Shirley Community Trust could not do what we do without our amazing volunteers. Thank you to everyone who contributes to making Shirley an awesome place to live!



MacFarlane Park Centre



Venue Hire

The MacFarlane Park Centre is a great place to host community groups, hold social functions, or run small group classes.

Proceeds from hireage of the Park Centre help further build community in Shirley.

Bookings are available as a one-off hire or for regular events. For more information, please visit the SCT website at shirleycommunitytrust.org.nz/venue-hire or contact us at bookings@shirleycommunitytrust.org.nz.

Thankfulness Lunch

A huge thank you to everyone who turned up for the Thankfulness Lunch and Community Forum in June, and shared their feedback and ideas about Shirley.

If you were not able to make it to the forum but have ideas for how we can improve our community, you can always talk to Sharyn at the Neighbourhood Centre or email office@shirleycommunitytrust.org.nz.

Thank you to Nelson Ching at WHO's the Caterer for supplying the savouries for the lunch.



23 Acheson Avenue
Ph. 03 385 6428 or
027 204 1950

whosthecaterer@outlook.co.nz

WHO's the Caterer can help you with breakfasts, lunches, dinners or suppers for any occasion.

Or contact us for fundraising ideas. Place settings for up to 200 people.

LET'S PLAY AT AVON HUB

MON 8TH, TUES 9TH, FRI 12TH
JULY
MON 15TH - FRI 19TH JULY
10:30AM - 12:00PM

OUTDOORS ON THE TURF FOR THE FIRST WEEK, INSIDE THE GYM FOR SECOND WEEK
STICK, BAT & BALL GAMES
NO SIGN UP, JUST TURN UP AND PLAY
SUIT 5-12 YEARS, FREE TO ALL

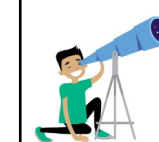


AVON HUB, NORTH PARADE, RICHMOND

KidsFest

Fun and educational activities for kids of all ages

KidsFest is a two-week Council events programme for Canterbury children aged 0-17 years. The festival offers a number of exciting craft, science, performing arts, sports and technology events and activities through the winter school holidays.



Check out www.kidsfest.co.nz for events and booking details.



Do you want to help build safer communities?

Community Patrols are made up of local people who want to give something back to their community. Our volunteers work closely with the NZ Police to keep our community safe, we'd love for you to join us.

For more information contact Mary Chappel

CHRISTCHURCH NORTH COMMUNITY PATROL
chchnorthpatrol.chair@gmail.com or visit www.cpnz.org.nz.

Empowering people...changing lives



(03) 981 5521



office@shirleycommunitytrust.org.nz



[shirleycommunitytrust](https://www.facebook.com/shirleycommunitytrust)



www.shirleycommunitytrust.org.nz

Thanks to all those who contribute to this newsletter – through articles or photos plus all those who deliver the copies each month.



Shirley Village Project

"Shirley residents and organisations working together for a 'caring, colourful, and connected' Shirley Community."



Create Shirley

Create Shirley is offering several opportunities to repair or repurpose your pre-loved clothing or toys. For info on any of the following events, contact Emma 022 103 8351

Mending, Sewing, and Alterations

Starting Thursday 27th June, on the last Thursday of the month there will be a sewing session from 2- 4 pm down at the Neighbourhood Centre. Janet will be there to support with mending and alterations. Bring your clothing down to give it a new life.

Rag Rug Workshop

Sunday 7th July, 2 - 4 pm at the Neighbourhood Centre. Join us and learn how to give old clothes a new life. If possible please bring 4-5 old items of clothing or bedding to use.

School Holiday Special - Redesign and Create

Monday 8th July 3:30 - 6 pm at the MacFarlane Park Centre. Clothing workshop for Intermediate age up. Bring old clothes to redesign or t-shirts, hoodies or bags etc to add designs to. Followed by a pizza dinner.

School Holiday Special - Broken Toy Mash Ups

Thursday 11th July and Sunday 14th July 2 - 4 pm at the Neighbourhood Centre. Bring any broken toys or bits and bobs that could be used to make a new creature. Suitable for kids of all ages. Children under 12 must have an adult companion.

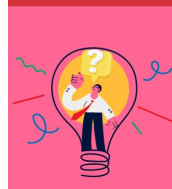


Shirley Firewood Club still has some wood available for \$170 for a trailer load of 2 cubic metres delivered. (Price will differ for addresses outside Shirley).

If you want to save money on next year's wood, sign up with Steve to find out about working bees that earn you discounts.

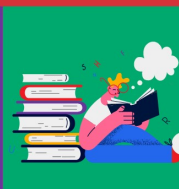
Contact Steve shirleytoolshed@gmail.com or 021 186 3645.

WISE UP WEDNESDAY



10 AM

Wednesday 3 July
MacFarlane Park Centre



All
Welcome!

Morning tea
provided

This month,
Linda and Teresa will discuss

Being the Boss of Your Money

How to make your money
work for you.



For more
information,
contact Teresa on
027 581 2555

shirley
community trust



We are starting a monthly group for residents to support each other in keeping homes warm and energy bills down. If you'd like to learn how to help others, come to our session with Michael Begg from Community Energy Action on Thursday 4th July, 10 am - 12 pm. RSVP to Bec 021 125 7846 or bec@shirleyvillage.org.

If you would like to chat about winter energy tips for your home, drop in to the Neighbourhood Centre on Thursday 1st August between 10 am and 12 pm.

Congratulations to these recent Volunteer Award recipients

Volunteer Canterbury - Volunteer Recognition Award

Janet Chisnall helps at our Community Hub on Wednesdays with Fruit and Vege pick up, providing a welcoming face for all who pop in. Janet has a gracious manner with everybody that walks in the door, a truly humble and caring lady who gives so much and considers it a privilege to help others.

Janet is also our green fairy, mending, recycling and re-purposing whatever items she can. We appreciate her wisdom and knowledge in this area - a valuable resource and influence in our community. She will be at the Create Shirley Mending, Sewing and Alterations workshops on the last Thursday of the month at the Neighbourhood Centre 2.00-4.00 pm.



Waipapa Papanui-Innes-Central Community Board (CCC) - Community Service Awards



Jamie McQueen has volunteered at the MacFarlane on the Park Café since 2018 and then for the last five years been our barista trainer. He did barista training with the Trust, then because of his great coffee skills and calm patient personality he was the obvious choice to take over the training when Keza left.

Jamie has a chronic health condition, yet until this escalated recently it has never stopped him wanting to share his knowledge and skills with community, always with a smile and positive attitude. We so miss him, but he has left the training in good hands with one of his trainees, Masako capably taking over from him.

The barista training on Mondays and Wednesdays at the Neighbourhood Centre is very popular with between 50-70 trainees taking up this opportunity each year. The course is comprehensive, and Jamie was very involved in the developing the training manual to go alongside the barista programme. The training adds so much to the community hub atmosphere at the Centre and the community love the barista coffees available for \$2!

Lesley Watson has served at the Macfarlane on the Park Café and Nail Care Clinic for many years, in fact Lesley herself has difficulty working out how many. Sparkling Stars, the music preschool group started 4 years ago, and Lesley has helped by making the morning tea weekly since then, always baking something yummy for the children and caregivers. The week of a Nail Care Clinic, she bakes extra so the team helping at the clinic can enjoy them as part of their lunch. This is Lesley, always thinking of ways she can generously care and support others. The clients who attend the Nail Care Clinic enjoy Lesley's massages and conversation. When there is a break or gap Lesley will be there knitting and this too is shared with others, whether that be a pair of socks or beanie.

Thank you Lesley for your generous care and support given to so many through your commitment over many years.

Shirley community gives thanks for Janet, Jamie and Lesley, and all that they do in this community.



For more information about Shirley Village Project and the programmes we run please visit www.shirleyvillage.org or Shirley Village on Facebook

We deliver Sunshine in Shirley to every letterbox in our neighbourhood. We hope you value our newsletter more than advertising or junk mail. However, if you do not wish to receive this newsletter, please contact us at office@shirleycommunitytrust.org.nz. Thanks, the SCT team.