

# Sunshine in Shirley

October 2025

Kia ora koutou

A great day was had by all at the recent

## Shirley Spring Market.

Thank you to everyone involved!



**FUN FAMILY EVENT**

PIRATE THEME

GOLD COIN ENTRY

# LIGHT PARTY

**FRIDAY 31ST OCTOBER**  
**EMMETT STREET COMMUNITY CHURCH**  
 (106 EMMETT STREET)  
**5-7PM**

SAUSAGE SIZZLE \* GAMES \* BALLOON ANIMALS  
 CRAFT \* BOUNCY CASTLE & MORE

Emmett Street COMMUNITY CHURCH

St. Stephen's

shirley community trust

## "PICK-UP" TOUCH RUGBY

**MONDAY NIGHTS | 6:15**  
**MACFARLANE PARK**

**STARTS 6<sup>TH</sup> OCTOBER**

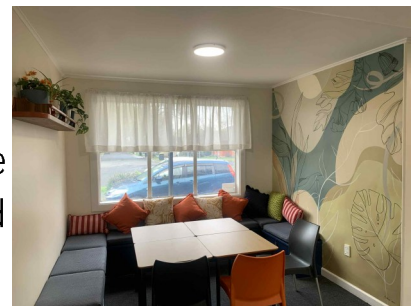
Casual as I Turn up when you can  
 All abilities | No cost

More info: Tim 027 655 7172

shirley community trust

## Neighbourhood Centre Refresh

Have you checked out the updated Neighbourhood Centre yet?



Open on Mondays and Wednesdays with Barista Training and other activities, or Fridays with MacFarlanes on the Park Café. This is a warm welcoming space for everyone.

Check out the back page for What's On during the week.

## Frocktober

Bargains galore!

\$10 & below

raising funds for ovarian cancer research  
 buy a dress for a good cause  
**MacFarlane Park Centre, Shirley**  
**4 October 2025**  
**10.00 a.m. - 2.00 p.m.**

Project by  
 SOROPTOMIST INTERNATIONAL

Supported by  
 CORDE Limited  
 ReUse Shop

As part of Frocktober 2025, Soroptimist International Christchurch are hosting a Charity Bazaar to raise funds for the Ovarian Cancer Foundation NZ (OCFNZ). Hundreds of pre-loved dresses at just \$5-\$10.

**MacFarlane Park Centre, Shirley**

**Saturday, 4 October 2025 10:00 a.m. - 2:00 p.m.**

Whether you're after a budget-friendly bargain, a spring/summer wardrobe refresh, or a frock for a special occasion – there's something for everyone!

# KIDZONE

**3:30 - 4:30 PM**  
**WEDNESDAYS**  
 During term time

Kidzone is a **FUN** after school programme for **primary age children**

It includes crafts, sports, life skills and more!

Afternoon tea provided.

**AT THE Park Centre**

**Space is now available from Term 4 2025**

**Contact Sharyn for enrolments 022 621 8269**



Don't forget to vote in the City Council election.

Voting closes on 11 October, you can post your completed papers in a post box until 7 October, or drop at voting boxes at Shirley Library or Woolworths at the Palms.

**shirley**  
 community trust

Empowering people, changing lives



office@shirleycommunitytrust.org.nz



www.shirleycommunitytrust.org.nz



shirleycommunitytrust



03 981 5521



Office is located at corner of Clearbrook Street and Briggs Road

**Thanks to all those who contribute to this newsletter – through articles or photos plus all those who deliver the copies each month.**







www.shirleyvillage.org  
facebook: Shirley Village  
instagram: shirleyismyvillage

## COMMUNITY MURAL OPENING CELEBRATION

- Friday 3 Oct, 4-6pm
- Golf Links Rd entrance, The Palms
- Free kai, kids activities

Thank you to the many locals aged 1 to 80 who contributed their creativity to this collaborative mural. Come and check it out!

## NOURISH ORAKA NEEDS YOUR HELP

This community enterprise is on a mission to provide tasty, nutritious chilled and frozen meals at an affordable price (\$3 soups and snack packs, \$7 meals). To keep prices low they need to sell more! Try them if you haven't yet, and tell your friends! Find them at:

- 27 Acheson Ave on Mon and Wed 1-2pm and 5-7pm
- Riverlution Farmers Market (50B Vogel St) on Sat 9am-12:30pm
- www.nourishoraka.com

## EMMETT / RISELAW OAK

Earlier this year 23 trees were felled on Emmett and Riselaw Streets. If you would like to be involved in making things using the oak timber from these trees please text Tim on 022 198 4765.



# What's on:

Neighbourhood Centre: 17 Acheson Avenue  
Park Centre: 19A Acheson Avenue  
Community Garden: Off Jebson Street



Monday / Rāhina	9.30am - 11.30am	<b>Shirley Sparkling Stars* - Park Centre</b> Music, movement, craft, & play for 0-5 year old's and their whānau. \$3 per family. Contact Carol: 027 282 0693
	10.00am - 2.00pm	<b>Neighbourhood Centre*</b> A warm, welcoming community space with \$2 barista drinks* (10.30am-1.30pm). Barista training* - \$7 per session. TechMate device support first Monday of the month. Contact Sharyn: 022 621 8269
	2.30pm - 4.00pm	<b>Listening Post* - Community Garden</b> Afternoon tea, activities for tamariki, a chance for grown ups to chat. No cost. Contact Shanice: 022 597 5909
	6.15pm - 8.00pm	<b>'Pick Up' Touch Rugby - MacFarlane Park (outside the Park Centre)</b> Casual games, all abilities, no cost. During Daylight Saving. Contact Tim: 027 655 7172
Tuesday / Rātū	10.00am - 1.30pm Every 3 weeks	<b>Nurse-led Foot Care Clinic - Park Centre</b> Foot spa/massage and nail care overseen by a Registered Nurse. Appointments essential. Cost: \$15. Contact Sharyn: 022 621 8269
	3.15pm - 4.00pm	<b>Children's Gardening Club* - Community Garden</b> A free after-school programme, registration required. Contact Colin: 027 6391 331
Wednesday / Rāapa	10.00am - 2.00pm	<b>Neighbourhood Centre*</b> A warm, welcoming community space with \$2 barista drinks* (10.30am - 1.30pm). <ul style="list-style-type: none"><li>• Barista training* - \$7 per session.</li><li>• Fruit &amp; Vege bag - \$15. Pick up 10am - 2pm. Contact Sharyn to order: 022 621 8269</li><li>• Affordable Hair Cuts - last Wednesday of the month. Contact Sharyn to book: 022 621 8269</li></ul>
	10.00am - 12.00pm Fortnightly	<b>Knit &amp; Knatter Group - Park Centre</b> Meet on yellow bin weeks to knit for good causes. Contact Sue: 027 6149 600
	10.00 - 11.30am Fortnightly	<b>Groove &amp; Move Seated Exercise Sessions - Park Centre</b> Meet on red bin weeks. No cost. Contact Teresa: 027 581 2555
	11.00am - 1.00pm	<b>Employment &amp; Services Support - Neighbourhood Centre</b> Free support for employment, study or accessing services. Contact Teresa: 027 581 2555
	3.30pm - 4.30pm	<b>Kidzone* - Park Centre</b> A free after-school programme for primary-age kids. Contact Sharyn: 022 621 8269
	5.15pm - 6.15pm	<b>Kapa Haka* - Park Centre</b> A group of locals learning Kapa Haka songs and dance. No cost. Contact Bec: 021 125 7846
Thursday / Rāpere	6.30pm - 7.30pm	<b>Te Reo Māori* - Park Centre</b> A relaxed environment to learn some basic Māori language. No cost. Contact Ann: 027 4700 442
	10.00 - 11.30am	<b>Groove &amp; Move Seated Exercise Sessions* - Park Centre</b> No cost. Contact Teresa: 027 581 2555
	12.00pm - 2.00pm Fortnightly	<b>Sewing Circle - Neighbourhood Centre</b> Sewing machine available to work on your project. Meet on yellow bin weeks. Contact Teresa: 027 581 2555
	1.00pm - 3.00pm	<b>Gardening - Community Garden</b> A place to garden, sit, and chat with others. Contact Ann: 027 4700 442
Friday / Rāmere	9.30am - 12.00pm	<b>MacFarlanes on the Park Café* - Neighbourhood Centre</b> A warm, community café with fabulous food and barista drinks.
	10.00am - 11.00am	<b>Shirley Walking Group* - meet at the Café</b> Join a group who walk around Shirley for 30-45mins. Contact Teresa: 027 581 2555
<b>All welcome at any activities</b> <b>*These groups meet during school terms only</b>		

We deliver Sunshine in Shirley to every letterbox in our neighbourhood. We hope you value our newsletter more than advertising or junk mail. However, if you do not wish to receive this newsletter, please contact us at [office@shirleycommunitytrust.org.nz](mailto:office@shirleycommunitytrust.org.nz). If you would prefer to receive the newsletter in digital format, you can sign up at <https://shirleycommunitytrust.org.nz>. Thanks, the SCT team.